



WHO'S  
FIXED ON INTEGRITY



## CELL-FREE DNA BCT®

A blood collection tube for stabilization of cell-free plasma DNA, CTCs and cellular DNA. The preservative in Cell-Free DNA BCT stabilizes nucleated blood cells, preventing the release of genomic DNA, allowing isolation of high-quality cell-free DNA. Stabilizes cell-free DNA and cellular DNA for up to 14 days and CTCs for up to 7 days. Available in 10.0 mL and 2.0 mL tubes.



## CELL-FREE RNA BCT®

A blood collection tube for sample collection, stabilization and transport of cell-free RNA. The patented preservative in Cell-Free RNA BCT stabilizes cell-free RNA in plasma and prevents the release of non-target background RNA from blood cells during sample processing and storage. Stabilizes cell-free RNA for up to 7 days at room temperature. Available in 10.0 mL tubes.



## CELL-FREE DNA URINE PRESERVE

A liquid reagent that stabilizes cell-free DNA all cellular components in urine, including red blood cells, white blood cells, and proteins present at the time of collection, allowing for additional downstream urinalysis. Cell-Free DNA Urine Preserve ensures sample integrity for prenatal and disease diagnosis as well as treatment efficacy and organ transplant rejection monitoring. Stabilizes urine samples for up to 7 days at room temperature.



## CYTO-CHEX® BCT

A direct-draw blood collection tube that preserves whole blood samples for immunophenotyping by flow cytometry. The preservative maintains the integrity of the white blood cell cluster of differentiation (CD) markers at room temperature for convenient transport and storage. FDA 510(k) cleared for consistent recovery of HIV associated lymphocyte subsets for up to 14 days. Available in 5.0 mL and 2.0 mL tubes.



## STRECK CELL PRESERVATIVE™

An easy-to-use liquid preservative that maintains cellular antigen expression, including cluster of differentiation (CD) markers and cell morphology of biological samples for analysis by flow cytometry. Streck Cell Preservative eliminates the adverse effects that time, storage and transport conditions can have on sample integrity. Stabilizes samples for up to 7 days. Available in 10.0mL and 1.0 mL vials.



## Blood Collection Tube

Cell-Free DNA BCT® is a blood collection tube with a preservative stabilizing nucleated blood cells. This unique stabilization prevents the release of genomic DNA, allowing isolation of high-quality cell-free DNA. It also has been demonstrated to minimize the degradation of CTCs.

### Multiple Applications

Recover high-quality cell-free DNA suitable for a wide range of downstream applications commonly used in clinical research studies, drug discovery and diagnostic assay development.

### Consistent Results

Enhanced stability and recovery of cell-free plasma DNA minimizes variability associated with cell-free DNA sample preparation.

### Improved Logistics

Cell-Free DNA BCT reduces the need for immediate plasma preparation and CTC processing due to unique stabilization properties. Cell-free DNA is stable for up to 14 days at 6 °C to 37 °C, while circulating tumor cells are stable for up to 7 days, at room temperature, allowing convenient sample collection, transport and storage.

### Specifications

Blood Draw Volume	10.0 mL or 2.0 mL
cfDNA/gDNA Sample Stability	14 days at 6 °C to 37 °C
CTC Sample Stability	7 days at 15 °C to 30 °C
Shelf Life	24 months from manufacture

### Ordering Information

Cell-Free DNA BCT® CE	Catalog #
6-Tube Pack (10.0 mL) glass	218996
100-Tube Pack (10.0 mL) glass	218997
1000-Tube Pack (10.0 mL) glass	230244
6-Tube Pack (2.0 mL) glass	230250
100-Tube Pack (2.0 mL) glass	230251

FOR EXPORT ONLY. NOT FOR SALE IN THE U.S.

## Blood Collection Tube



Cell-Free RNA BCT® is a blood collection tube for preservation and stabilization of cell-free RNA in plasma for up to 7 days at room temperature. The patented preservative maintains the integrity of the plasma by preventing the release of cellular RNA from blood cells during sample handling, storage and transport.

### Applications

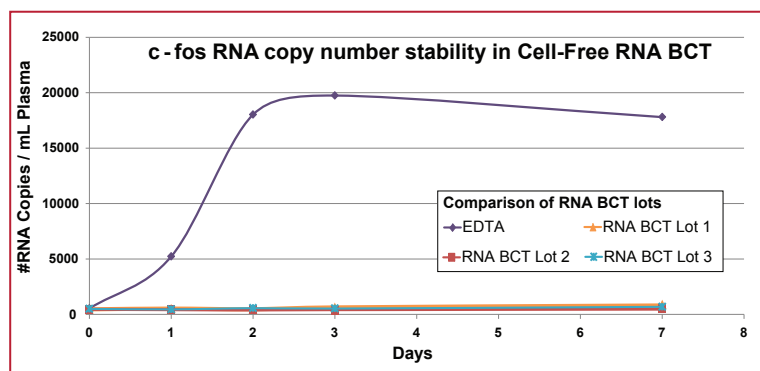
Recover high-quality cell-free RNA suitable for a targeted PCR applications commonly used in clinical research studies, drug discovery and diagnostic assay development.

### Consistent Results

The enhanced stability and recovery of cell-free plasma RNA minimizes variability associated with cell-free RNA sample handling and storage.

### Specifications

Blood Draw Volume	10 mL
cfRNA Sample Stability	7 days at 18 - 25 °C
Shelf Life	24 months from manufacturer



Plasma cell-free RNA was isolated from whole blood stored in K3EDTA and Cell-Free RNA BCT. Whole blood stored in K3EDTA had a significant increase in c-fos RNA copy number compared to whole blood stored in Streck Cell-Free RNA BCT over 7 days at room temperature. Three separate lots of Cell-Free RNA BCT were used and plasma extracted from whole blood of three subjects.

### Ordering Information

Cell-Free RNA BCT® CE	Catalog #
6-Tube Pack	230248
100-Tube Pack	230249

## Urine Preservative



Streck Cell-Free DNA Urine Preserve is an innovative, easy-to-use liquid preservative that stabilizes cfDNA in urine samples. Samples treated with Cell-Free DNA Urine Preserve are stable for up to 7 days when stored at 6 °C to 37 °C, eliminating the adverse effects time, storage and transport conditions have on sample integrity.

The discovery of cell-free DNA (cfDNA) in peripheral blood has been extensively studied and documented. The detected DNA can originate from a tumor, fetus or transplanted organs. More recently, it has been determined that small amounts of cfDNA can pass the kidney barrier and end up in urine.

Urine is a truly non-invasive source of cfDNA, a clear advantage over peripheral blood. The cfDNA isolated can be used for various applications, including disease monitoring (diagnosis, prognosis and treatment efficacy) and as a screening tool for hereditary conditions.

Cell-Free DNA Urine Preserve is contained in easy-to-dispense, one-time use vials. The 5.0 mL of liquid reagent is appropriate to preserve individual urine sample volumes from 25 mL to 100 mL.

### Specifications

Sample Volume	25 mL to 100 mL
Closed-Vial Stability	2 years
Open-Vial Stability	7 days
Storage Prior to Use	2 °C to 30 °C
Storage Mixed with Urine	6 °C to 37 °C

### Ordering Information

Product Description	Catalog #
20 x 5.0 mL	230216
5 x 5.0 mL	230230

### Associated Products

Cell-Free DNA BCT® is a blood collection tube which stabilizes nucleated blood cells. The unique preservative prevents the release of genomic DNA, allowing isolation of high-quality cell-free DNA.

Cell-Free RNA BCT® is a blood collection tube with a patented preservative which stabilizes cell-free RNA in plasma and prevents the release of non target background RNA from blood cells.

## Blood Collection Tube

Cyto-Chex® BCT is a direct-draw blood collection tube used for immunophenotyping of white blood cells by flow cytometry.



### Features and Benefits

- Direct-draw blood collection tube for the preservation of whole blood specimens
- Preservative minimizes the adverse effects of time, storage and transport conditions on sample integrity
- Samples can be held for up to 14 days prior to analysis, allowing for batch processing

### Cell Stabilization

- Maintains cellular morphology and surface antigen expression
- Samples are stable at room temperature for convenient transport and storage
- FDA 510(k) cleared for consistent recovery of HIV-associated lymphocyte subsets for 14 days

### Batching

Samples collected in Cyto-Chex BCT can be stored at room temperature for 14 days prior to analysis, improving laboratory efficiency.

- Reduce valuable labor time
- Reduce daily flow cytometry start-up costs
- Reduce the need for patient redraws

### Associated Product

Streck Cell Preservative™ is a liquid preservative that maintains cellular antigen expression, including cluster of differentiation (CD) markers and cell morphology of biological samples, for analysis by flow cytometry.

### Ordering Information

Product Description	Catalog #
<b>Cyto-Chex BCT Glass 5.0 mL</b>	
6-tube pack	213361
25-tube box	213362
100-tube box	213386
<b>Cyto-Chex BCT Glass 2.0 mL</b>	
6-tube pack	213559
100-tube box	218980

## Stabilization Reagent



Streck Cell Preservative™ is an easy-to-use liquid preservative that maintains cellular antigen expression, including cluster of differentiation (CD) markers of biological samples for analysis by flow cytometry. Samples treated with Streck Cell Preservative are stable for up to 7 days eliminating the adverse effects that time, storage and transport conditions can have on sample integrity.

### Liquid preservative for:

- Peripheral and cord blood
- Bone marrow aspirates
- Surgical tissue samples
- Fine needle aspirates

### Features and Benefits

- Batch samples to optimize laboratory workflow while maintaining sample integrity
- Minimize patient recalls/redraws and associated costs
- Potential decrease in personnel cost for overtime/weekend work
- Transport samples from collection site to centralized location or reference lab for analysis

### Associated Product

Cyto-Chex® BCT is a direct-draw blood collection tube used for immunophenotyping of white blood cells by flow cytometry, now available in a unique hybrid plastic tube. Cyto-Chex BCT has FDA 510(k) clearance for consistent recovery of HIV-associated lymphocyte subsets for 14 days.

### Ordering Information

Product Description	Catalog #
6 x 1.0 mL	213350
24 x 1.0 mL	213352
50 x 1.0 mL	213355
2 x 10.0 mL	213358



**STRECK**  
THAT'S WHO

**[streck.com](http://streck.com)**

**Distributor in Switzerland**



**RUWAG** Handels AG  
Life Science  
Bielstrasse 52  
2544 Bettlach  
Tel. +41 32 644 27 27  
Fax +41 32 644 27 37  
[order@ruwag.ch](mailto:order@ruwag.ch)  
[www.ruwag.ch](http://www.ruwag.ch)